



SEXY FISH

セクシーフィッシュ



JAPANESE WHISKIES



A FEW WORDS FROM THE TASTING PANEL...

This whisky menu features, for each expression, a few words to conjure in your mind that which awaits your palate.

In order to do this, each whisky had to be tasted by our panel. (Colin Dunn, Tristan Stephenson, Xavier Landais and Jérôme AllagUILlemette)

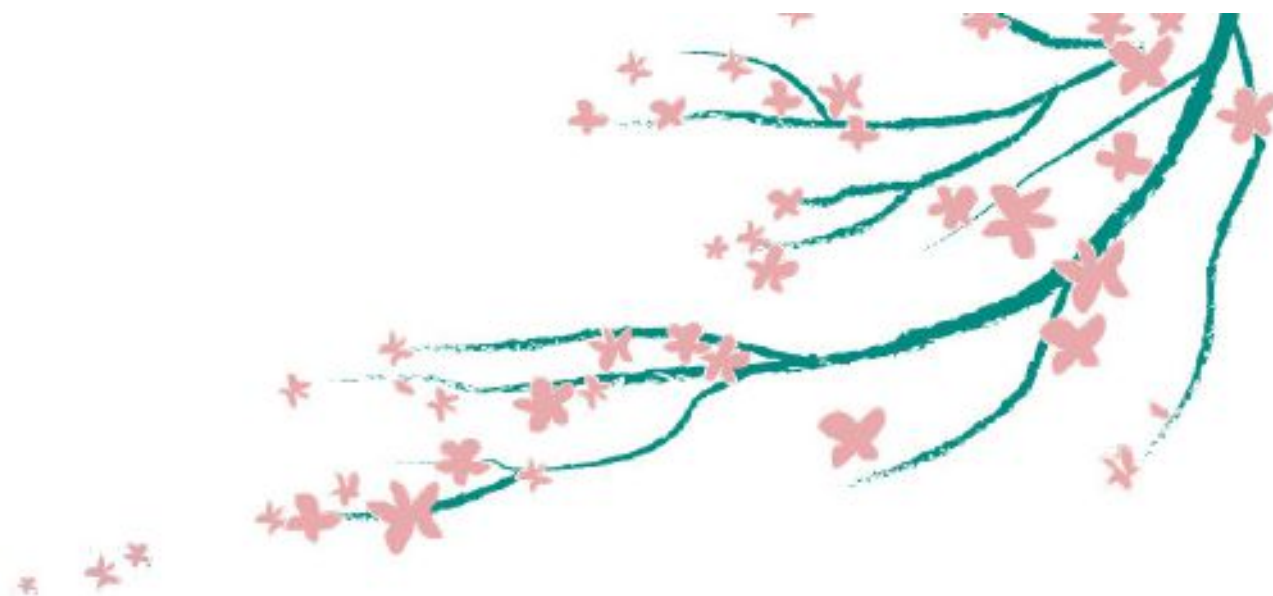
...It was a messy job, but someone had to do it.

"Japanese Whisky is the missing link between Bourbon and Scotch, making such a huge contribution to the whisky world, with new aromas, textures and flavours to delight its many fans, new and old. Sexy Fish has the same credentials, making a huge impact with their new Whisky Menu, meticulously put together by Xavier Landais, Jerome Alleguillettemette, Tristan Stephenson and myself, who, over a 12 month period, nosed and tasted over 400 expressions to give the Sexy Fish customers tasting notes on a gargantuan scale, never attempted before at this level.

Tradition and Innovation. These two word summarise both Japanese Whisky and Sexy Fish, paying attention to detail and service of the highest quality for their customers".

Colin Dunn
Whisky Ambassador/Cornishman





"The reputation that Japanese whisky has achieved is down to the profound expression of place that each bottle communicates. These liquids tell the story of oak and barley, but also of the people who make them, who have imbued their spirits with the many a varied flavours of this unique nation.

In tasting them, we have taken both a historical and geographical journey through the islands, encountering both the familiar and the unexpected. There's something for everyone here, but be selfish and do what we did—try them all!"



Tristan Stephenson
Bartender/Author





OUR SERVES

OUR STANDARD SERVE

All our Japanese Whiskies are served neat in a snifter glass. If you would like yours to be served on ice please ask your waiter.




HIGHBALL

This is the most popular serve for whiskies in Japan. The whisky is stirred with crystal clear ice in an Highball before being gently topped up with chilled soda water. The carbonation is bringing the whisky to life. This is a perfect serve for a smoky or peaty whisky like Hakushu or Yoichi.



MIZUWARI

Another Japanese favourite : the whisky is this time mixed with chilled still water. This serve suits more delicate malt like Miyagikyo.



All our serve involve hand carved or cut ice from a big block of crystal clear ice. This technique requires time and precision, please allow up to 10 minutes for the serve to be ready.

Standard serve 50ml, 25ml available on request.

NIKKA	
YOICHI DISTILLERY.....	6
MIYAGIKYO DISTILLERY.....	8
NIKKA COFFEY.....	10
NIKKA BLENDED.....	11

SUNTORY	
YAMAZAKI DISTILLERY.....	14
HAKUSHU DISTILLERY.....	16
CHITA DISTILLERY.....	17
SUNTORY BLENDED.....	18

INDEPENDENT DISTILLERIES	
CHICHIBU DISTILLERY.....	22
SHINSHU.....	25
WHITE OAK DISTILLERY.....	27
FUJI GOTEMBA.....	29
MONDE SHUZO.....	29
SAZANOKAWA.....	30
WAKATSURU.....	31
CHUGOKU JOZO.....	31
AIOI UNIBIO.....	32
TOYO JOZO COMPANY LTD.....	32
KAMIKI.....	32
SAPPORO SHUSEI.....	32
AKKESHI.....	32
THE BOUTIQUE-Y WHISKY COMPANY.....	32
TOYA SHUZO.....	33
HELIOS.....	33
KAIKYO.....	33

CLOSED DISTILLERIES	
KARUIZAWA DISTILLERY.....	34
HANYU DISTILLERY.....	37
KAWASAKI.....	38
KAGOSHIMA.....	39

COCKTAILS.....	39
GLOSSARY.....	40



YOICHI DISTILLERY

In 1934, after Masataka Taketsuru's 10 year contract with Suntory was up he realised his dream and set up his own whisky distillery on Hokkaido. Surrounded by mountains and the sea, with a climate not unlike the coastal whisky-producing communities in Scotland, he thought this site to be ideal for his distillery.

The first pot still was installed in 1935 and was made specifically to Taketsuru's orders. Yoichi distillery's signature is rich, Highland-like, peaty, slightly sulphury and very potent, almost masculine malts.



YOICHI NO AGE 45% lemon/fresh/green	20
YOICHI NO AGE LMDW 43% light/banana/stewed fruit/clean/nutty/fig/caramel	30
YOICHI 10yo 45% cream/hazelnut/sweet/chewy/sherry	40
YOICHI RUM FINISH 46% leather/burnt cowboy/smoke	45
YOICHI BOURBON FINISH 46% lychee/spice/well balanced/	45
YOICHI SHERRY FINISH 46% sultana/toffee/SHERRY	45
YOICHI 12yo 45% toffee/spirits/lingering/pepper	55
YOICHI WOODY & VANILLIC 55% banana/waxy/dark chocolate/coco/liqueur	70
YOICHI 2000's 9yo 57% manuka/marzipan/fragrant	70
YOICHI 15yo 45% wax/musk/demerara/charred oak	75
YOICHI 12yo SHERRY & SWEET 55% violet/sherry/butterscotch/sulphur/turbo charged sherry/sherry bomb	87
YOICHI HEAVILY PEATED 48% Yet to be tasted. Tell us what you think!	90





NIKKA

YOICHI DISTILLERY



Yoichi 12yo 70th Anniversary 58% aromatic/leather/violet/zesty/luxurious/tobacco	100
YOICHI 20yo 52% Umeshu/rose/sultana/tobacco/herbaceous/polished oak/ quintessential	100
YOICHI 1991 #29459 23yo VIRGIN PUNCHEON 62% burnt toast/charred oak/oak-grain balanced/barley davidson (big engine)	120
YOICHI 10yo #407281 63% minerals/paprika/blueberry	150
YOICHI SMWS 116.20 1987 26yo VIRGIN PUNCHEON 61% meaty/hearty/madeira/molasses/smoked almonds/muscular/animal	250
YOICHI SMWS 116.8 1986 19yo 52.9% F*****G CLASS/smoke	300



MIYAGIKYO DISTILLERY

Located in a rich, green, bamboo forested stretch of land with a humid and crisp air, surrounded by a towering mountain range, the Miyagikyo distillery is situated approximately 25km to the northwest of Sendai. It was completed in 1969 as Nikka's second distillery and came on stream in the same year.

MIYAGIKYO NO AGE 45% fresh pear/malt/citrus/lemon balm	20
MIYAGIKYO NO AGE LMDW 43% matured pear/on point/refined/pure/light almond	30
MIYAGIKYO 10yo 45% orange/fresh/young cognac/brown butter/breakfast whisky	30
MIYAGIKYO DISTILLERY EDITION BLENDED 40% Yet to be tasted. Tell us what you think!	30
MIYAGIKYO DATE 43% fragrant/aromatic/soft/lemon/menthol/perfumed	30
MIYAGIKYO 12yo 45% violet/bubblegum/ginger	35
MIYAGIKYO RUM FINISH 46% banana smoothie/white choc/nutmeg	45
MIYAGIKYO BOURBON FINISH 46% maple/pecan/elegant	45
MIYAGIKYO SHERRY FINISH 46% burnt toffee/glazed cherries/harissa	45
MIYAGIKYO 15yo 45% vibrant cherry/tobacco/oily	50
MIYAGIKYO MALTY & SOFT 55% strawberry/shortbread/butter/Japanese eton mess/moorish	50
MIYAGIKYO 2002 9yo #101127 REFILL SHERRY BUTT 62% rock salt/turkish delight/lavender/nougat/confectionery factory	60
MIYAGIKYO 1999 13yo #300092 HOGSHEAD 61% melba toast/apricot/japanese amaretto	65



NIKKA
MIYAGIKYO DISTILLERY

MIYAGIKYO 1996 18yo #66535 HOGSHEAD 62% floral/needs water/garden floral/elderflower/sweet cola/dandelion burdock	75
MIYAGIKYO 12yo SHERRY & SWEET 55% sherry bomb/raisin/prune/xmas cake/old oloroso/ sherry,sherry,sherry	78
MIYAGIKYO 2000's 53% toffee apples/orchard fruits/fresh	90
MIYAGIKYO 12yo 70TH ANNIVERSARY 58% fruity tobacco/chicha/spices/steely	100
MIYAGIKYO 1990 15yo #27216 HOGSHEAD 54% banana/pineapple/bbq/apple-wood/wood/herbaceous/sweet	140
MIYAGIKYO 15yo #54116 60% structured/glazed cherry/silky/alcohol burst/vanilla	150
MIYAGIKYO 1988 23yo #92414 57% amazing/f*****g delicious/wood/jewel in the crown of Miyagikyo/ undescrivable	300

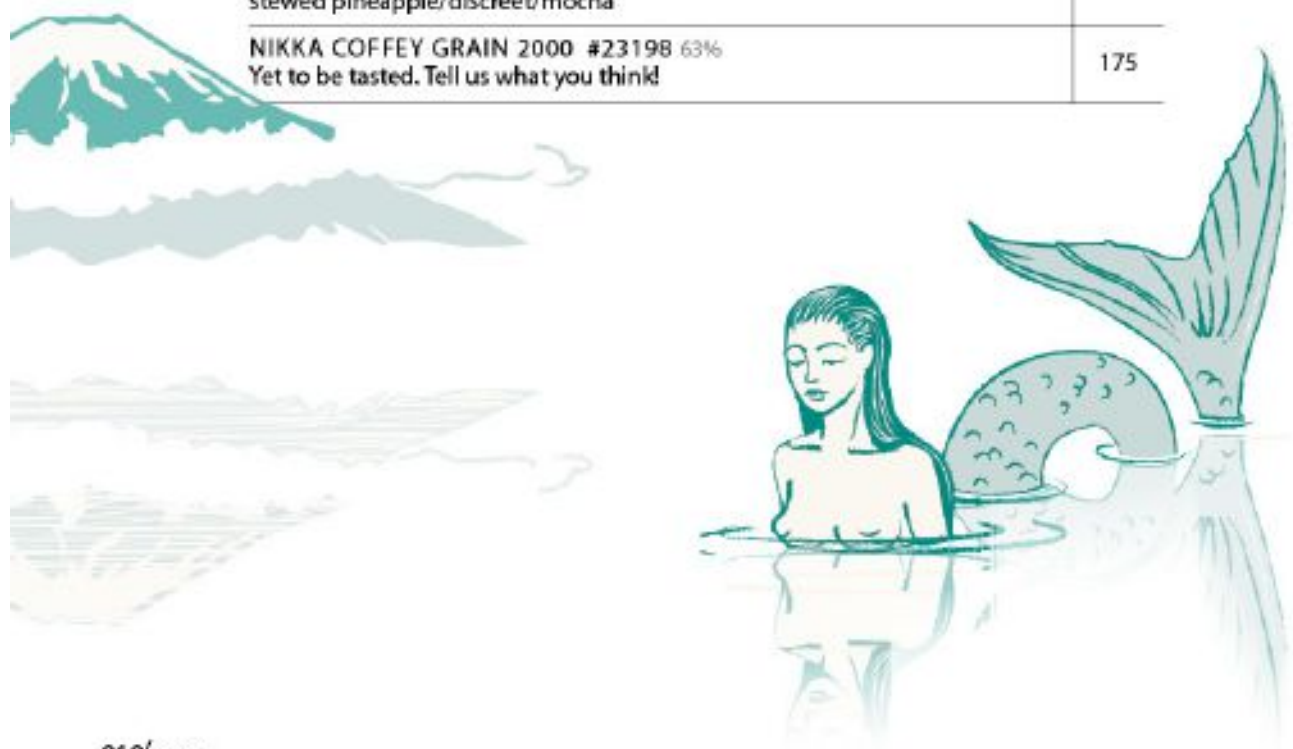


NIKKA COFFEY

Nikka operates two Coffey stills (named after its inventor Aeneas Coffey) within the Miyagikyo distillery for the elaboration of its grain whiskies.

Imported from Scotland in 1963, these old stills yield a distillate with more flavour and depth than modern column stills, imparting a distinct character that defines the house blends.

NIKKA COFFEY GRAIN 45% soft mint/cedar wood/mellow grain/hazelnut/session whisky	13
NIKKA COFFEY MALT 45% fragrant mint/butterscotch/rounded/creamy	13
NIKKA COFFEY MALT 2003 11yo #130541 HOGSHEAD 58% herbal/green/violet/menthol/oak	28
NIKKA COFFEY MALT 1998 14yo #143228 HOGSHEAD 60% nutty/creamy/cedar/sweet	32
NIKKA COFFEY GRAIN 1995 26yo #131524 63% glazed cherry/antique wood/juicy	60
NIKKA COFFEY GRAIN 1999 14yo #209699 BOURBON BARREL 63% tobacco/light plum	60
NIKKA COFFEY GRAIN 12yo 70TH ANNIVERSARY 58% smouldering perfume/nutty cedar	100
NIKKA COFFEY MALT 1998 14yo #218774 57% stewed pineapple/discreet/mocha	140
NIKKA COFFEY GRAIN 2000 #23198 63% Yet to be tasted. Tell us what you think!	175





NIKKA

NIKKA BLENDED

DAYS 40% best value highball on berkeley square	9
BLENDED 40% soft fruit/well balanced/umeshu/malty	9.5
ALL MALT 40% orchard fruit/biscuit/blackberry	10
FROM THE BARREL 51.4% cacao/sexy/juicy	12
PURE MALT BLACK 43% nutella/choc liqueur	13
PURE MALT RED 43% minty chocolate/after eight/honey/light citrus	13
TAKETSURU NO AGE 43% burnt orange/coffee liqueur/ marzipan/candied citrus/ light and concentrated/fruity	13
SUPER 43% earthy/mushroom/briny/salt	14
SUPER REVIVAL 43% floral/beeswax/lustre/shiny/tickle on the tongue/spirits	20
BLACK CLEAR WHISKY 37% brown bread/light/session whisky/biscuity/start of the night whisky	20
BLACK DEEP BLEND NIGHT CRUISE 2019 45% Yet to be tasted. Tell us what you think!	20
BLACK 8yo 40% dark spice/well matured/caramel/cedar/green/wood/figs/fresh/vibrant/milk chocolate	25
BLACK BLENDER'S SPIRIT 60TH ANNIVERSARY 43% floral/primrose/grippy/well structured	28
BLACK RICH BLEND 40% milk chocolate/creamy/cacao	30
NIKKA 12yo 43% stewed fruits/perfume/rhubarb/minerally finish/clean	30
BLACK MEMORIAL SPECIAL BLEND 40% haribo/amaretto/dry	30



NIKKA

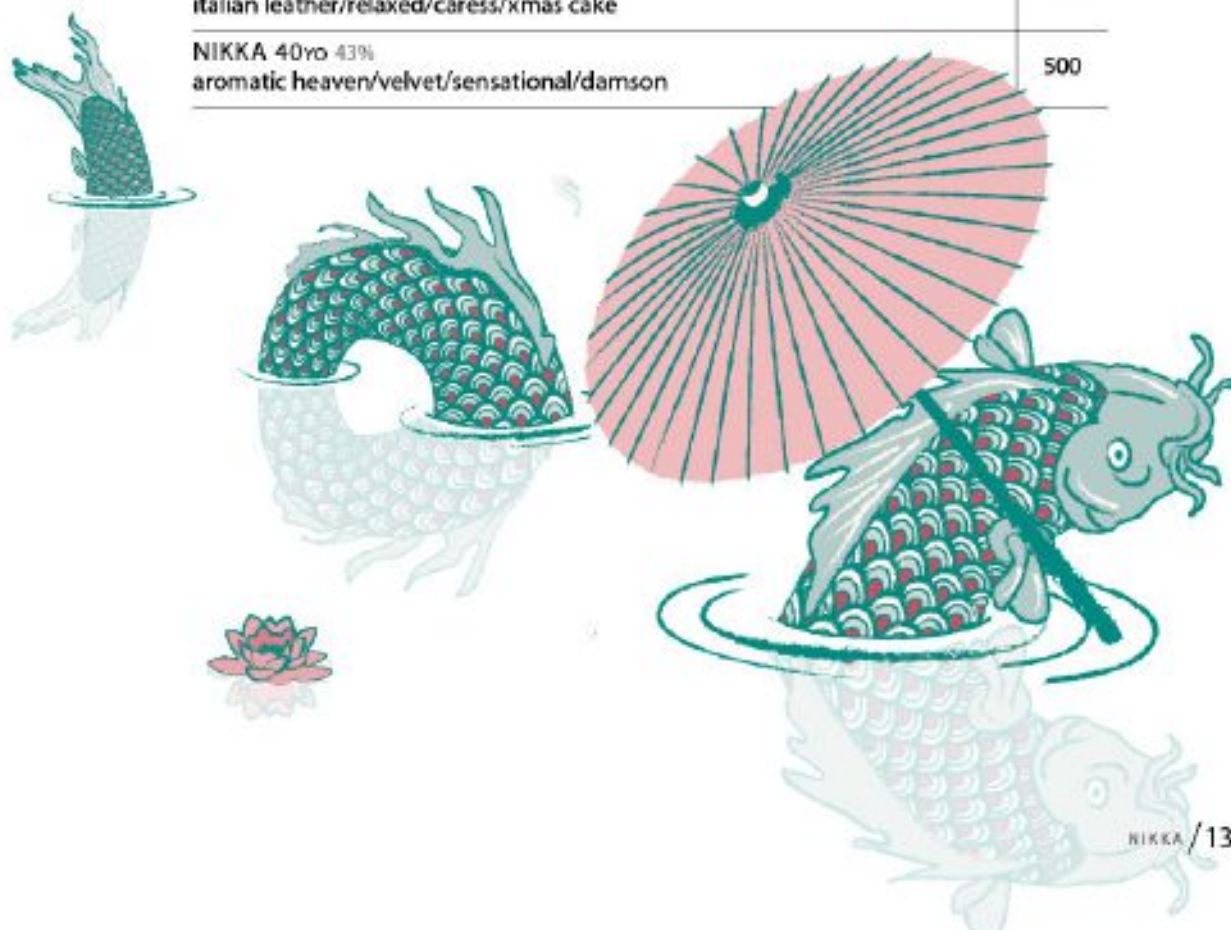
NIKKA BLENDED

SUPER PREMIUM 43% salted butter/wax/honeycomb/dry spice	30
BLACK SPECIAL 42% lilac/roasted red pepper/warm/rich mouth feel/dense	35
PURE MALT WHITE 43% light butterscotch/strawberry/red fruit/smoke/light peat/puff of smoke	35
GOLD & GOLD 43% carnations/polite whisky/floral	35
KINGSLAND OLD MALT 43% toffee/negroni whisky/campari/mineral	37
NEW KINGSLAND RING 1984 43% patchoulis/mushroom/violet/frosting	37
TAKETSURU 17yo 43% leather/oak/wax/juicy	40
HI! 1980'S 39% rich butter/high ball whisky/light	40
TSURU 17 43% Yet to be tasted. Tell us what you think!	40
HISA KINSOKU 100TH ANNIVERSARY 43% vegetal/artichokes/mustard	40
GOLD & GOLD 1979 HIROSHIMA TOYO CARP VICTORY 43% sweet/juicy/bubblegum/sweetshop	45
THE BLEND OF NIKKA 17yo 45% lavender/floral herbal/bay leaf/south of France	45
NIKKA HI HI 39% geranium/light/perfume	45
CLUB MALT 100 PURE & CLEAR 40% white chocolate/vanilla/light/dry	50
G&G KNIGHT COMMANDER 43% hearty dark chocolate/masculine/musk	50
TAKETSURU 21yo 43% vegetal/earthy/fresh wood	50
PURE MALT SHERRY CASK 40% sherry top notes/vibrant/light/intro to sherried whisky	60



NIKKA BLENDED

TAKETSURU 21 80TH ANNIVERSARY UNFILTERED 48% fruit/spice blend masterpiece/harmonious	65
KINGSLAND 43% wood/rose petal/turkish delight & espresso	70
SUPER 15yo 43% musty perfume/good oak/liquorice	80
GOLD & GOLD ARMOUR GOLD 43% nutty/cedar/fresh	80
TAKETSURU 21yo MADEIRA FINISH 46% cranberry/punchy/tannin/sweet & dry	85
NIKKA 100 40% vanilla/creamy/satisfying/custard tart	85
NIKKA ANNIVERSARY BLEND 2000 20yo 43% quintessential/perfume/class in a glass	85
NIKKA 70TH ANNIVERSARY BLEND 58% grilled banana/bbq/smoke/nikka in a bottle	100
NIKKA CASK STRENGTH 16yo 43% old musk/leather/antique furniture/vibrant/amazing balance	120
TAKETSURU 25yo PURE MALT 43% italian leather/relaxed/caress/xmas cake	125
NIKKA 40yo 43% aromatic heaven/velvet/sensational/damson	500



YAMAZAKI DISTILLERY

Believed to be the first Japanese whisky distillery, the Yamazaki distillery was founded in 1924 by Shinjiro Torii with Masataka Taketsuru as his Master distiller.

The distillery is located in the small town of Shimamoto, close to Kyoto in the Osaka Prefecture, and surrounded by native bamboo forests and three rivers, Katsuragawa, Kizugawa and Ujigawa, providing an excellent water source, known as the 'Water of Rikyu'

YAMAZAKI DISTILLER'S RESERVE 43% lemon sherbet/jasmine/grassy/malty/yeast/pine	13
YAMAZAKI 12yo 43% chocolate/nougat/dry/chewy/roasted nuts	25
YAMAZAKI LIMITED EDITION 2014 43% cherry fruit cake/soaked cherries/griottes/sweet	40
YAMAZAKI 1999 12yo #DQ70032 PUNCHEON 58% young and bright/green/mint/pepper/vegetal/Greek meze/celeriac/candied sherbet	45
YAMAZAKI 18yo 43% plums/baking spices/soft ginger/cinnamon/hippy shop/sweet chicha	45
YAMAZAKI BOURBON BARREL 2013 48.2% herbaceous/lavender/creamy/vanilla/zesty/lemon meringue pie	45
YAMAZAKI LIMITED EDITION 2015 43% crème brûlée/bubblegum/aged leather/dry/dark	55
YAMAZAKI DISTILLERY EXCLUSIVE #287075 40% grilled and green banana	55
YAMAZAKI DISTILLERY EXCLUSIVE #279067 40% melon/sake	55
YAMAZAKI DISTILLERY EXCLUSIVE #278906 40% peppery/malty/meaty/green tomato/lemon and ginger/ floral	55
YAMAZAKI BOURBON BARREL 2011 48% wine gum/floral/lime sherbet/orange flower/AWESOME	60
YAMAZAKI PUNCHEON 2011 48% mustard/orange marmalade/light char	60
YAMAZAKI PUNCHEON 2012 48% beurre blanc/jasmine/macadamia/vanilla/creamy	65
YAMAZAKI PUNCHEON 2013 48% dry/winey acidity/session whisky	65
YAMAZAKI 12yo WATAMI PRESIDENT'S CHOICE 43% earthy/toffee apple/flapjack/glossy/golden syrup/clay	70
YAMAZAKI LIMITED EDITION 2016 43% rosewood/cola sweet/ fruit and spice/dry dates/honey	70
YAMAZAKI 12yo WATAMI FOUNDER'S CHOICE 43% hibiscus/red fruits/honey	80

YAMAZAKI DISTILLERY

YAMAZAKI W007 48% marshmallow/choc orange	80
YAMAZAKI LIMITED EDITION 2017 43% cardamom/polish wood/orchard red apples/oily	80
YAMAZAKI PLUM LIQUEUR CASK FINISH 43% Yet to be tasted. Tell us what you think!	80
YAMAZAKI 93 YOKOHAMA PORT 150TH ANNIVERSARY 53% soft brown sugar/hazelnut/SWEETness/SUPER WHISKY	110
YAMAZAKI 98 YOKOHAMA PORT 150TH ANNIVERSARY 61% heat and sweet/AWESOME	110
YAMAZAKI 98 IZUYAMA 60TH ANNIVERSARY 60% Yet to be tasted. Tell us what you think!	135
YAMAZAKI 2008 REFILL SHERRY CASK THE ESSENCE OF SUNTORY 53.5% pineapple/ginger/yuzu/just lovely	150
YAMAZAKI 25yo 43% harmony/wax/fruit/fruit/soft deliciousness/ goji berry	170
YAMAZAKI MIZUNARA CASK 2012 48% vibrant/mystic/mizunara/citrus/mango/pineapple	180
YAMAZAKI MIZUNARA CASK 2013 48% wax/clynelish like	180
YAMAZAKI 10yo NISSEN SINCE 1949 40% floral	190
YAMAZAKI OWNER'S CASK 1999 16yo #DR70083 PUNCHEON 59% mandarin/orange/pineapple/watermelon	190
YAMAZAKI 18 MIZUNARA CASK 2017 48% wicker/fruit basket/green apple	200
YAMAZAKI 1996 12yo FIRST FILL SHERRY BUTT 60% wood/AWESOME/sultanas/DELICIOUS	240
YAMAZAKI OWNERS CASK 1992 14yo #ZM70409 BOURBON BARREL 54% smouldering peat/TOP TOP TOP	250
YAMAZAKI SHERRY CASK 2013 48% puff leather/funky/rose/floral	350
YAMAZAKI SHERRY CASK 2016 48% sherry bomb/waxy/oily/polished/dark/juicy and fresh/yamazaki in a leather jacket	400
YAMAZAKI OWNERS'S CASK 1993 SPIRIT OF MALT SERIES 61% eat dry cherries on a bombfire/AWESOME	500

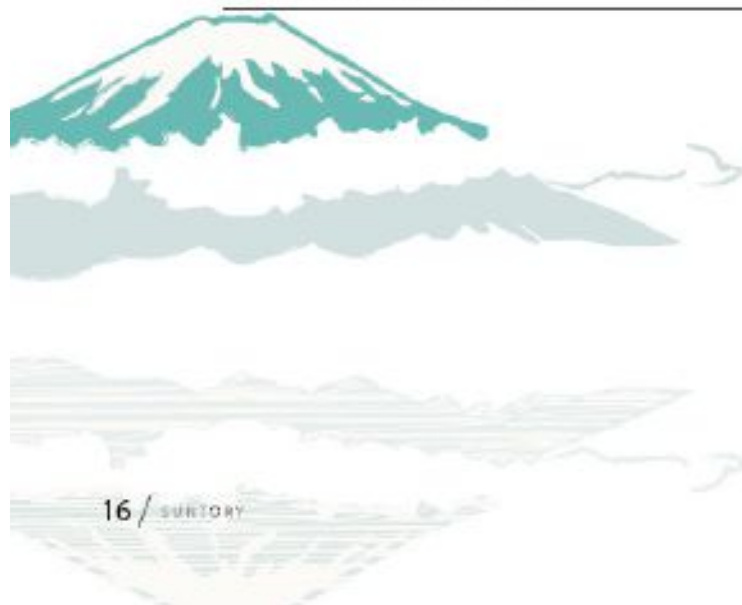


HAKUSHU DISTILLERY

Built in 1973, 50 years after Suntory's first distillery, Hakushu is the world's largest malt distillery in terms of its production. It is located in Hakushu forest, in the city of Hokuto. Hakushu, meaning 'white sandbar' got its name from the alluvial, white sand fanned out on the banks of the Ojira and Jingu rivers.

Surrounded by clean and cool air and at 700 metres above sea level, the distillery is twice as high as most of its Scottish and local counterparts and so low-pressure distillation occurs naturally, which helps contribute to the whisky's lighter and distinct West Highland character.

HAKUSHU DISTILLER'S RESERVE 43% gala apples/mint/eucalyptus/green	13
HAKUSHU 12yo 43% highball whisky/ herbaceous/light smoke/clean	20
HAKUSHU 18yo 43% pear drop ester/gentle/daisy/countryside/white chocolate	45
HAKUSHU 10yo SINGLE MALT 40% peat	50
HAKUSHU 10yo PURE MALT 40% pear/peat/tropical notes/seaweed	50
HAKUSHU BOURBON BARREL 2011 48.2% marzipan/flexible/light/fragrant/melba toast	60
HAKUSHU 25yo 43% buttery/toasty/oak/musky/vanilla/rich	110
HAKUSHU 1995 YOKOHAMA PORT 150TH ANNIVERSARY 43% sweet spice/green/SUPER BALANCED	110
HAKUSHU 1981 KIOKE SHIOMI PURE MALT 43% fruit/oranges/sweets/chewy/jasmine/flora	120
HAKUSHU 1996 YOKOHAMA PORT 150TH ANNIVERSARY 43% honey treacle/MISO/savoury	135



HAKUSHU DISTILLERY

HAKUSHU SHERRY CASK 2012 48% vegetal/savoury/miso/smoked chocolate/wood & grain balance/cherry	150
HAKUSHU OWNER'S CASK 1990 17yo #OD40177 HOGSHEAD 61% green/vegetal/smoke/perfume/AWESOME	160
HAKUSHU 10yo HOGSHEAD 1996 62% luster/wood/young and beautiful/orange blossom/jasmine/orange sherbet	185
HAKUSHU SHERRY CASK 2013 48% cured meat/juicy/patanegra/tobacco	200

CHITA DISTILLERY

The Sun Grain Chita distillery was founded by Suntory in Chita, Aichi prefecture in 1972. As the name suggests, grain whisky is its specialty. Most of the grain whisky produced in Chita is used to compose the famous Hibiki blends.

CHITA SINGLE GRAIN 43% peaches/mint/balsa wood/fruity chicha	25
CHITA G13.1 SMWS 4yo 58.3% AMAZING VALUE/soft/sweet/sipping/candied sweetness/altar whisky	35





SUNTORY

SUNTORY BLENDED

HIBIKI JAPANESE HARMONY 43% toffee/leather/delicate/light/sugared almonds	12
HIBIKI JAPANESE HARMONY MASTER'S SELECT 43% oily/spice/bitter almond/apricot	25
HIBIKI BLENDER'S CHOICE 43% Yet to be tasted. Tell us what you think!	30
HIBIKI JAPANESE HARMONY SPECIAL EDITION 43% toffee apple/candy floss/leather/floral/dry/fresh moist tobacco	30
HIBIKI 17yo 43% candy floss/marshmellow/cherry blossom.	35
HIBIKI BLENDED 1991 43% Yet to be tasted. Tell us what you think!	60
HIBIKI BLENDED 1997yo 43% Yet to be tasted. Tell us what you think!	60
HIBIKI VINTAGE 1991 43% wax/leather/whittle toffee/yuzu/AMAZING/peppery/finish better than ronaldo/wood, wood, wood	75
HIBIKI 12yo FINAL VINTAGE 43% shiso leaf/moscovado sugar/fruits/mandarin	85
HIBIKI 21yo 43% demerara sugar/plum/cherry/honey/elderflower/ smells like English country garden/so fragrant	85
HIBIKI VINTAGE 1989 FIRST EDITION LION'S CREST 43% Yet to be tasted. Tell us what you think!	95
HIBIKI 30yo 43% overripe banana/wood, wood, wood/cinnamon doughnut	150
TORYS CLASSIC 37% lemon balm/light/highball whisky/cereal	12
ROYAL SLIM BOTTLE 43% hazelnut/light in character/refined/banana skin/ fruity and spicy	15
KAKUBIN PREMIUM FINAL VERSION 40% lemon/butter/highball whisky	20



SUNTORY BLENDED



TOKI 43% lemon pie/oily/super light/round/steely	20
RED LABEL 39% cherry/fruit cake/light/anise	25
VERY RARE OLD WHISKY FOR 1972 WINTER OLYMPICS 43% date/plum/jam/pinot noir	25
OSAKA JC 50TH ANNIVERSARY 43% spiced rum/mace/pimento/caribbean style/nutmeg	25
'ZA' FINAL VERSION 40% fudge/caramel/rounded	25
ZEN PURE MALT 100% FINAL VERSION 40% honey/toffee/light/creamy	30
OLD WHISKY CLUBHOUSE 43% raisin/sultanas/brandy/white chocolate	30
HAKUSHU HOKUTO 12yo 40% Description, description, description, description.	30
KAKUBIN 1980'S 40% pear/light/highball	32
KAKUBIN BLACK LABEL 43% sweet/ripe plum/very good	32
RED SUPER SMOOTH CLEAN & DRY 39% light/fresh apricot/bubblegum	35
OLD WHISKY EXPO '85 43% banana/apple/matured/smells like a distillery fermentation room (wash-back)/AWESOME	40
OLD WHISKY MILD & SMOOTH 43% cacao nibs/milky coffee/lilac/floral	40
ROYAL 60'S-70'S 43% honeydew/orange water	40
SPECIAL RESERVE 1960'S 43% creamy toffee/banana skin/dessert whisky/ finesse/aromatic/VERY GOOD WHISKY.	40
HISA KINSOKU 100TH ANNIVERSARY 43% nectarine/citrus/tropical/pineapple/mango/tropical island/VERY GOOD	40
WHITE 43% white peach/cedar/soft mint	40



SUNTORY BLENDED

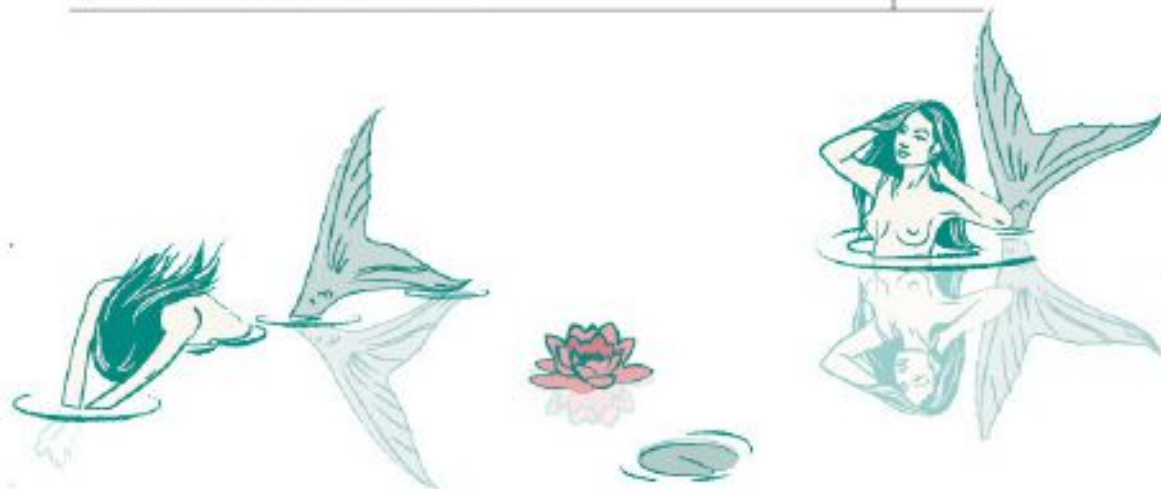
ROYAL 43% redcurrant/juicy/cherry	40
OLD WHISKY SNAKE 43% under-ripe pear/honey/malty	40
OLD WHISKY HORSE 43% violets/liquid perfume/jam/floral	40
OLD WHISKY MOUSE 43% spice/gentle fruit/summer fruit	40
OLD WHISKY WHEAT 43% meaty/marsala/muscular/different/REALLY GOOD	40
OLD WHISKY DRAGON 43% custard/light	40
OLD WHISKY JOETSU SHINKANSEN 43% banana/honey wax/oats/scotch like/tamarind	40
OLD WHISKY SEA BREAM 43% relaxed whisky/coffee/chocolate/espresso	40
ROYAL 12% SUMMIT OKINAWA MEMORIAL LABEL 40% caramel/turbo charged banana/BBQ/REALLY GOOD	40
OLD WHISKY SHEEP 43% herbaceous/green/sweet	45
OLD WHISKY RABBIT 43% toffee/fudge/white chocolate/sherbet/honeysuckle/structured/VERY GOOD	45
OLD WHISKY BOAR 43% straw/hay/wood spice/aromatic/matured fruit/VERY GOOD	45
SUNTORY 60TH ANNIVERSARY 43% overripe banana skin/plum/light	45
IMPERIAL 43% tobacco/juicy cherry/perfume	50
SUNTORY MILLENNIUM DECANTER 43% spice/furniture polish/marzipan/grapefruit/caramel/ground ginger	50



SUNTORY

SUNTORY BLENDED

SUNTORY ROYAL 15yo GOLD LABEL 43% toffee/rich/toblerone	50
COMMEMORATION OF TSUKUBA EXPO 1985 40% banana/barrel char/light/delicate	60
OPEN GOLF TOURNAMENT 20TH ANNIVERSARY 43% fudge/orchard fruits/oak/almond	60
SPECIAL RESERVE OPEN TOURNAMENT 43% tropical zing/spice/balanced/malt/lavender	65
ROYAL ZODIAC WHISKY FOR THE YEAR 2017 43% honey/treacle/banana pancake/nutmeg	65
OLD SUNTORY 60-70'S 43% cigar box/green/umeshu/sandlewood	70
EXCELLENCE 70'S 43% sulphur/citrus/balanced	70
ROYAL 15TH OPEN GOLF TOURNAMENT 2005 43% fruit salad/toffee/treacle	70
ROYAL HAWAIIAN OPEN 1988 43.4% banoffee pie/cardamom/earthy/REALLY GOOD	70
ROYAL 12yo YEAR OF THE HORSE 43% pepper/linger/to the point	80
TORYS FUJI 40% banana bread/malt/dill	80
PRESTIGE 25yo 43% stewed raisins/fruit trifle/rose/AWESOME	150
SUN-CO NOBLESSE OBLIGE 25yo 43% apricot/amaretto/oak/A MASTERPIECE	300



INDEPENDENT DISTILLERY

CHICHIBU DISTILLERY

The latest addition to Japanese whisky producers, Chichibu started in March 2008. Located only 70km from Tokyo, near the Arakawa River, Chichibu was founded by Ichiro Akuto-san, heir to the old Hanyu distillery.

Rough winters and hot and humid summers, provide the perfect maturity to the whiskies produced in Chichibu despite their young age. A small distillery, Chichibu produces small quantities, but the remaining stocks of Hanyu, Kawasaki and Karuizawa hosted on site allow Ichiro Akuto to offer rare and exceptional malt whiskies.

CHICHIBU MALT & GRAIN 46% lemon/stewed apple/fresh	20
CHICHIBU MALT & GRAIN BLACK LABEL 50% butterscotch/shortbread/orange and wood	25
CHICHIBU/HANYU DOUBLE DISTILLERIES 46% apple crumble/fall fruits/buttery	25
CHICHIBU/HANYU WINE WOOD RESERVE 46% floral/lilies/white	25

CHICHIBU SEXY FISH EDITION 6YO #5253 CHASSAGNE-MONTRACHET PINOT NOIR CASK 60.2 a dram for angels to share	30
---	----

CHICHIBU LONDON EDITION 2019 48.5% Yet to be tasted. Tell us what you think!	30
CHICHIBU MALT & GRAIN PURPLE LABEL 48% Yet to be tasted. Tell us what you think!	30
CHICHIBU #2279 WHITE BORDEAUX 60.4% Yet to be tasted. Tell us what you think!	35
CHICHIBU #2279 MILROYS SOHO 60.4% Yet to be tasted. Tell us what you think!	35
CHICHIBU #1788 ZUMA ROCA 62.8% Yet to be tasted. Tell us what you think!	35
CHICHIBU ON THE WAY BOTTLE 2015 55.5% banana/popcorn/yuzu/AWESOME	35
CHICHIBU COEDONADO BEER CASK 59.2% Yet to be tasted. Tell us what you think!	35
CHICHIBU #2074 HOGSHEAD 62% Yet to be tasted. Tell us what you think!	40
CHICHIBU #2074 BLACK ROCK 62% Yet to be tasted. Tell us what you think!	40



INDEPENDENT DISTILLERY

CHICHIBU DISTILLERY

CHICHIBU US EDITION 2019 55.5% Yet to be tasted. Tell us what you think!	40
CHICHIBU/HANYU MIZUNARA WOOD RESERVE 46% super balanced/melon	40
CHICHIBU 2011 7YO IMPERIAL STOUT CASK 59.5% Yet to be tasted. Tell us what you think!	45
CHICHIBU 2009 7yo #635 BOURBON BARREL NO1 10TH ANNIVERSARY 62% eclair/meringue/orange flower/AWESOME	45
CHICHIBU 2009 7yo #635 BOURBON BARREL NO1 10TH ANNIVERSARY 62% eclair/meringue/orange flower/AWESOME	45
CHICHIBU THE PEATED 2018 55.5% Yet to be tasted. Tell us what you think!	50
CHICHIBU IPA CASK FINISH 2017 57.9% acétone/BBQ ribs/caramel	50
CHICHIBU 2012 5yo #2088 SECOND FILL BOURBON BARREL 63.2% luster/wood/young and beautiful/orange flower	50
CHICHIBU 2009 7yo #633 BOURBON BARREL 61.4% smoke/oily/petrol heads/whisky reisling/paraffin	50
CHICHIBU FIRST FILL SHERRY HOGSHEAD 5YO #2588 61.9% 5yo? No way Jose	55
CHICHIBU LONDON EDITION 2018 61.3% hazelnut/nutella on toast/rich	60
CHICHIBU TRAVEL EXCLUSIVE 2019 60.6% Yet to be tasted. Tell us what you think!	60
CHICHIBU ZOETROPE 61.4% Yet to be tasted. Tell us what you think!	60
CHICHIBU CHIBIDARU 2009 3yo 53.5% cured meat/muscular/UNBELIEVABLE/a master class on whisky making.	70
CHICHIBU PARIS EDITION 2019 50.5% Yet to be tasted. Tell us what you think!	70
CHICHIBU PARIS EDITION 57.3% Yet to be tasted. Tell us what you think!	80

INDEPENDENT DISTILLERY

CHICHIBU DISTILLERY

CHICHIBU U.S. EDITION 2018 56.4% Yet to be tasted. Tell us what you think!	80
CHICHIBU TOKYO BAR SHOW 2018 53.5% honey dew melon/cucumber/precision	80
CHICHIBU THE FIRST 3yo 61.8% nutty/macadamia/white choc/tonka/cocoa aromatics	80
CHICHIBU WHISKY FESTIVAL 10TH ANNIVERSARY 6YO EX-HANYU HOGSHEAD 59.9% Yet to be tasted. Tell us what you think!	80
CHICHIBU THE SINGLE CASK #1700 SWEDEN 2012 60.9% Yet to be tasted. Tell us what you think!	80
CHICHIBU SMWS 130.2 TROPICAL THUNDER 60.9% Yet to be tasted. Tell us what you think!	80
CHICHIBU GEISHA LABEL #3538 59.1% Yet to be tasted. Tell us what you think!	80
CHICHIBU MALT & GRAIN MADURO 58% Yet to be tasted. Tell us what you think!	80
CHICHIBU INTERGALACTIC EDITION 1 #2112 63.5% Yet to be tasted. Tell us what you think!	80
CHICHIBU INTERGALACTIC EDITION 2 #4549 55.8% Yet to be tasted. Tell us what you think!	80
CHICHIBU UNPEATED BOURBON CASK 2011 58.6% Yet to be tasted. Tell us what you think!	90
CHICHIBU PEATED BOURBON CASK 2012 62.5% Yet to be tasted. Tell us what you think!	90
CHICHIBU JAPAN WARRIOR SERIES ONE #2369 61.9% Yet to be tasted. Tell us what you think!	100
CHICHIBU/HANYU GASAI 61.9% honeydew/glewy/corn bread/cornflakes	100
CHICHIBU 2010 6yo KUSUDA WINE CASK 59.4% red fruits/sloe gin/vegetal/damson/red pepper	130
CHICHIBU 2010 4yo #2640 PX & HOGSHEAD 59.4% saddle leather/wood/hay/rose water/cumin	140
CHICHIBU MALT & GRAIN THE PENINSULA TOKYO 2018 58% Yet to be tasted. Tell us what you think!	150
CHICHIBU THE PEATED 2009 3yo 50.5% iodine/lime/sweet peat	175



INDEPENDENT DISTILLERY

SHINSU DISTILLERY

Located 800 meters high in Miyata village on Nagano Prefecture, Shinshu distillery was founded in 1985 by Hombo Shuzo Ltd, producer of shochu since 1872. The distillery, which used to produce whisky only during winter, as it also produced other distilled liquors such as brandy, halted its whisky production in 1992, due to sluggish demand. In 2011 production was resumed following the recovery of the whisky market first seen in 2007..

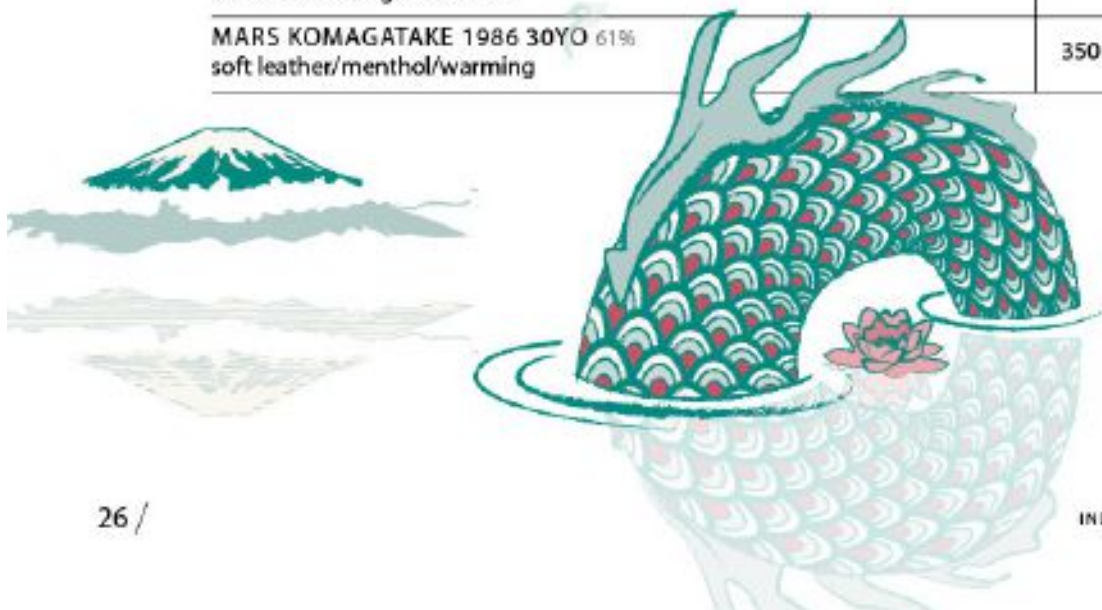
MARS KASEI BLENDED WHISKY 40% coconut/banana/latte	12
MARS KARUIZAWA CLUB 40% milk choc/lime/fresh	15
MARS SAIGON DON 40% malty/orchard fruits/balanced	15
MARS TWIN ALPS 40% apple soda/acidity/Granny smith/highball	18
MARS MALTAGE COSMO 43% jam/red fruits/pomegranate	20
MARS THE REVIVAL 3YO 58% breakfast cereal/cucumber/smoke	22
MARS BURN THE BARREL 40% cinnamon/wood/char	25
MARS KOMAGATAKE 3YO SHERRY & AMERICAN OAK 57% fruity/sherry/spice/tropical/punchy/AMAZING VALUE, MORE LIKE A 10YO	25
MARS SHINSHU FOR SHINANNOYA 1992 12yo #1124 SHERRY BUTT 43% Yet to be tasted. Tell us what you think!	25
MARS SHINSHU FOR SHINANNOYA 1992 #1143 AMERICAN OAK 43% Yet to be tasted. Tell us what you think!	25
MARS KOMAGATAKE KOHIGANZAKURA NATURE OF SHINSHU 52% lemon/ginger/raw/untamed	30
MARS THE LUCKY CAT 39% rum/wine/whisky	35
MARS KOMAGATAKE RINDO 52% almond croissant/puff pastry/fruit/punchy/highball	35



INDEPENDENT DISTILLERY

SHINSU DISTILLERY

MARS AMERICAN WHITE OAK #1143 43% Yet to be tasted. Tell us what you think!	35
MARS KOMAGATAKE BARTENDERS PROJECT 43% pistachio/chocolate/leather/waxy	35
MARS KOMAGATAKE SHINANOTANPOPO 52% barley sugar/zingy/plum/dry	40
MARS AMBER 40% pear/gala apples/cream/honeysuckle	40
MARS IWAI TRADITION 40% cacao/molasses/rich dry fruit	40
MARS MOSHI MOSHI 20YO 40% light/botox whisky (doesn't mater how old it is)	47
MARS KOMAGATAKE 2014 HEAVILY PEATED #1855 59.8% smoked almonds/mineral/AWESOME	60
MARS MALTAGE 10YO 40% toasted oak/floral/rare	70
MARS KOMAGATAKE 2012 3YO #1436 SHERRY CASK 58% agave/metal/tequila/AWESOME	80
MARS MALTAGE 10YO OLD WINE CASK FINISH 40% cherry haribo/red fruits/wine	85
MARS KOMAGATAKE 27YO AMERICAN OAK #479 FOR PEN AND SHINANNOYA 59% ginger/Seville orange/rich	125
MARS KOMAGATAKE SHERRY CASK #569 1988 40% coffee/falernum/lean, mean/AWESOME	150
MARS MALTAGE 3+25 43% herbaceous/long/AWESOME	250
MARS KOMAGATAKE 1986 30YO 61% soft leather/menthol/warming	350



EIGASHIMA SHUZO WHITE OAK DISTILLERY



This distillery, predating Suntory and Nikka is located near Seto Inland Sea. A licence was granted in 1888 to distil alcohol, starting with Shochu. In 1919 the production of barley-based alcohol left the pot stills. Whisky production has occurred on the premises since. The White Oak survived difficult years at a cost and as a micro-distillery produces extremely limited amount of single malts...

AKASHI WHITE OAK MEISEI 40% pears/green malt/scottish	13
AKASHI EIGASHIMA RED 40% grassy/malty/young/light/fresh	13
AKASHI WHITE OAK BLENDED 40% malty/poached pear/black cherry	15
AKASHI TOKINOKA WHITE BLENDED 40% Yet to be tasted. Tell us what you think!	15
AKASHI TOKINOKA BLACK BLENDED 50% Yet to be tasted. Tell us what you think!	20
AKASHI WHITE OAK SEA ANCHOR 40% banana chips/banana chips/banana chips	20
WHITE OAK AKASHI SINGLE MALT 46% banana skins/light	20
WHITE OAK AKASHI SINGLE MALT BOURBON BARREL 56% wood/vanilla/acetone/caramel	20
AKASHI 6YO WHITE WINE CASK 50% Yet to be tasted. Tell us what you think!	25
AKASHI 5YO SHERRY CASK #1375 50% Yet to be tasted. Tell us what you think!	25
AKASHI 6YO RED WINE CASK 50% Yet to be tasted. Tell us what you think!	25
AKASHI 5YO SINGLE CASK LIMOUSIN COGNAC 55% lilac/peppery/mineral	30
AKASHI 5YO SHERRY CASK 50% Yet to be tasted. Tell us what you think!	35



EIGASHIMA SHUZO - WHITE OAK DISTILLERY

AKASHI ARIAKE VIRGIN CASK 5YO OLOROSO SHERRY CASK FINISH 50% papaya/winy/fresh	40
WHITE OAK AKASHI TOKYO BAR SHOW 2017 61% creamy oak/beurre noisette/banana/HUGE/t stagg like/BOURBON	50
AKASHI SINGLE MALT 5YO #61071 55% damson/Autumn fruit/matured youth	50
AKASHI WHITE OAK BOURBON CASK #1129 55% cream fudge/butter/clotted cream	60
WHITE OAK AKASHI 5YO RED WINE CASK 50% cherries/umeshu/sloe	60
WHITE OAK AKASHI 10YO OLD SHERRY BUTT #5164 60% hot/sweet vanilla/opens with water	60
AKASHI SINGLE MALT 8 40% strudel/shortbread/jam	65
AKASHI SINGLE MALT 5YO 'JAPANESE LABEL' 59% manuka/honeysuckle/dry mango	70
AKASHI 5YO "SUN" AMERICAN OAK AND SHERRY CASK 56% vanilla latte/zinky pepper	75
EIGASHIMA 5YO BOURBON CASK FOR GAIAFLOW 50% banana/toffee/fresh	80
AKASHI WHITE OAK BOURBON CASK #1130 FOR SHINANNOYA 57% creamy banana/white chocolate/patisserie	85
AKASHI WHITE OAK 12YO SHERRY CASK 50% sweet plum/cocoa/tannic	100
AKASHI WHITE OAK 14YO WHITE WINE CASK 56% burnt oak/sherry/Rhum/different!	115
AKASHI WHITE OAK 15YO SHERRY CASK AND KONARA OAK 58% polished wood/super dry/lavender	120
KIKOU 2011 #11055 59.5% buttered toast/malty/sourdough bread	150
AKASHI 12YO "MOON" SHERRY CASK 59% almond chocolate/sugar plums/melon/RIDICULOUS	175



FUJI GOTEMBA DISTILLERY

Fuji-Gotemba distillery, founded in early 1970's, is located in the town of Gotemba, which lies at the foot of Japan's iconic Mount Fuji. It holds the record for being the world's current largest whisky distillery, covering a massive 1.7 million square feet (520,000 square metres) and has a capacity of an impressive 12 million litres a year. It produces both single malt and grain whiskies from imported barley and grain from Scotland and Ireland. Fuji-Gotemba is one of the few distilleries in Japan to have its own bottling plant and cooperage...

KIRIN SEAGRAM BAR PREMIUM 40% lilac/floral/well balanced/high ball	14
KIRIN OAK MASTER 40% honeydew	20
SINGLE GRAIN BLENDERS CHOICE 46% penny toffee/oak/creamy oak/corn on the cob	25
SINGLE MALT BLENDERS CHOICE 46% anise/rye/vanilla spice	25
KIRIN 50% caramel butter/paraffin riesling	25

MONDE SHUZO DISTILLERY

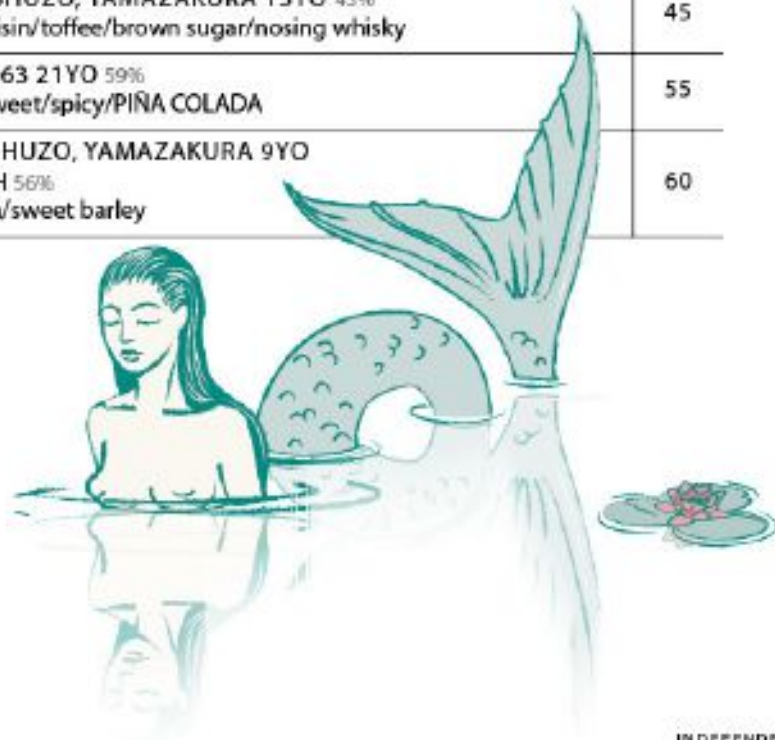
A relatively young company, Monde Shuzo was established in 1952 in the town of Isawa in Yamanashi prefecture, just west of Tokyo. It is mainly known for producing wine, Chinese spirits and vodka, although it also produces a small quantity of whisky each year...

ISAWA BLENDED MALT 40% acetone/perfume/lavender	14
MONDE ROYAL CRYSTAL BOTTLING 40% hearty/herbacous/pine/vegetal	18
FUJIKAI SINGLE MALT 10YO 43% creamy fruit/banana/walnut	35
SINGLE GRAIN BLENDERS CHOICE 46% penny toffee/oak/creamy oak/corn on the cob	25

SAZANOKAWA DISTILLERY

Sazanokawa distillery is based in Koriyama City, Fukushima Prefecture, which is inland from the main tsunami-hit areas and about 40 miles from the stricken Fukushima No.1 nuclear plant. Nevertheless, it did suffer significant damage in the March 11 disaster.

SAZANOKAWA YAMAZAKURA BLENDED 40% blended scotch?	20
SAZANOKAWA BLACK LABEL BLEND 40% black cherry/charred wood/light sweet grain	20
YAMAZAKURA 963 MALT AND GRAIN 59% nutty/vanilla/balanced	20
YAMAZAKURA 963 8YO 58% hot/slick/spicy	25
YAMAZAKURA 963 8YO 59% lemon/butter/dry	25
SAZANOKAWA SHUZO, YAMAZAKURA BLENDED 16YO 40% cereal/biscuit/strawberry	30
YAMAZAKURA PURE MALT 48% butter/cereal/honey	35
SAZANOKAWA SHUZO, YAMAZAKURA 15YO 43% dark chocolate/raisin/toffee/brown sugar/nosing whisky	45
YAMAZAKURA 963 21YO 59% roasted apricot/sweet/spicy/PINA COLADA	55
YAMAZAKURA SHUZO, YAMAZAKURA 9YO CASK STRENGTH 56% caramel/marzipan/sweet barley	60





INDEPENDENT DISTILLERY

WAKATSURU DISTILLERY

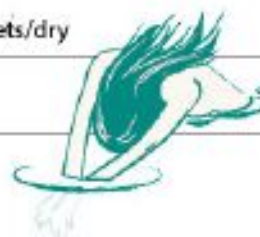
The history of Wakatsuru breweries stretches back to the Tokugawa era in 1862. In what is now known as the city of Fukuoka, a wealthy farmer named Kyujiro obtained a license for brewing. The company would continue to be a family business until 1918 when it became a public company.

WAKATSURU SHOZOU, SUNSHINE 37% flowers/spice/mild lemon	40
SUNSHINE 20YO 40% lemongrass/lemon/vanilla	75

TOGOUCHI CHUGOKU DISTILLERY

Founded near the city of Hiroshima, Chugoku Jozo produce since 1918 fruit liqueurs, sake and shochu. Chugoku Jozo does not distil whisky but imports it already distilled, directly from Scotland for malt whisky and from Canada for grain whisky. The barrels of whisky are imported and then first stored in a foreign cargo area by the Japanese customs authorities until Chugoku Jozo performs the duties with paying the taxes and, somehow, naturalizes the whisky contained in these casks which become officially Japanese. The whisky is then aged in sherry and brandy casks, in a unique location : a tunnel with a length of 361 meters drilled in 1970 by JR Japanese railway company, in order to expand the line up from Kabe to Hamada in Shimane.

TOGOUCHI PREMIUM 40% caramel/toffee/banoffee pie/cheesecake/sweet/easy/perfect beginners whisky	16
TOGOUCHI 12YO 40% spice/fruit cake/rich	18
TOGOUCHI 18YO 43% vegetal/molasses/black pepper/great finish/szechuan button	20
TOGOUCHI 9YO 40% mature fruits/ripe banana/creamy/grain	20
TOGOUCHI 8YO 40% cabbage/vegetal/pine needles/effervescent	25
TOGOUCHI FOR HIROSHIMA TOYO CARP 40% primrose/bluebell/aromatic/perfumed/young/violets/dry	40
TOGOUCHI 15YO 43.8% toffee/um & raisin/dried fruit/fruit cake	45



AIOI UNIBIO DISTILLERY

AIOI UNIBIO, RAINBOW 37% lemon grass/lemon/vanilla	19
AIOI UNIBIO, RAINBOW 12YO 40% oily/Sancho pepper/light	19

TOYO JOZO COMPANY LTD

JUPITER J.B.A. 42% like a sexy lumberjack	20
--	----

KAMIKI

KAMIKI 48% banana chips/pot pourris	25
KAMIKI INTENSE WOOD 48% Yet to be tasted. Tell us what you think!	30

SAPPORO SHUSEI DISTILLERY

The Sapporo Shusei distillery is located in the beautiful area of Hokkaido.
The brewery has long used the underground water of Sapporo mountain range to produce quality drinks popular in Hokkaido

SAPPORO 55 43% bubblegum/light/ highball territory	19
SAPPORO 40 40% stone fruit/ figs/ates/nutmeg	19
SAPPORO 37 37% sweet rhubarb/red apples	19

AKKESHI DISTILLERY

AKKESHI NEW BORN FOUNDATIONS 2 58% Smells like teen spirits	50
--	----

BOUTIQUE-Y WHISKY COMPANY

JAPANESE BLENDED WHISKY #1 21YO 47.5% nutmeg/dark chocolate fondant/cacao/cognac/wood & grain harmony	60
--	----

INDEPENDENT DISTILLERY

TOYA SHUZO DISTILLERY

GOLDEN HORSE BUSHU 43%
glazed strawberries/red fruits/eton mess/jammy/clean/mineral/GREAT
VALUE FOR MONEY

15

HELIOS DISTILLERY

KURA THE WHISKY PURE MALT 40%
peat/citrus/mineral

15

KURA THE WHISKY PURE MALT JAPANESE RUM BARREL 40%
fresh/citrus

100

KAIYO

KAIYO THE PEATED MIZUNARA OAK 46%
Yet to be tasted. Tell us what you think!

10

KAIYO MIZUNARA 43%
spice/dry/sprightly

20

KAIYO MIZUNARA CASK STRENGTH 53%
expressive/young/feisty

25

NAGAHAMA DISTILLERY

NAGAHAMA NEW MAKE HEAVILY PEATED 59%
Yet to be tasted. Tell us what you think!

20

OOTORI

OOTORI 12YO BLENDED WHISKY 43%
Yet to be tasted. Tell us what you think!

15

KAIKYO

HATOZAKI PURE MALT JAPANESE 46%
Yet to be tasted. Tell us what you think!

10

CLOSED DISTILLERIES

KARUIZAWA

Opened in 1955, Karuizawa distillery had always imported its malted barley from Scotland, and was probably the first Japanese distillery to do so. The decrease of local whisky consumption forced Mercian Company (the owner) to close in 2001. UK based Number One Drinks Company bought the remaining stock of the Karuizawa, releasing special editions of this soon to be finished treasure.

OCEAN 100% MALT 43% plum/ground coffee/dry/peppery/citrus/banana/creamy/white chocolate	40
OCEAN 100% GRAIN 43% pine/moss/caraway/menthol/mushroom	40
OCEAN WHITE SHIP 40% pear/pineapple/sauvignon blanc/gooseberry	50
GLORIA OCEAN SHIP 43% coffee/wood/vintage fabrics/bodega aromas	50
HANSHIN TIGERS 2003 SENSHI TACHI 37% toffee/crunchy choc bar/sweet/honeycomb	60
SPIRIT OF ASAMA 48 48% lemon verbena/on point/polished wood	70
SPIRIT OF ASAMA 55 55% cherry/moscatel/rum and raisin/choc/sultanas	70
8YO PURE MALT 40% fresh wood/bitter orange/honey/breakfast spread whisky/fragrant	80
OCEAN HEAVEN MERCIAN BLEND 40% maritime/drinking lemon sherbet on the deck of a ship/creme fraiche	80
8YO MERCIAN MASTERS BLEND 46% aromatic/leather/violet/zesty/luxurious/tobacco	90
SPIRIT OF ASAMA 1999-2000 52% umeshu/rose/sultana/tobacco/herbaceous/polished oak/quintessential	100
KARUIZAWA/KAWASAKI OOTORI 15yo 40% burnt toast/charred oak/oak-grain balanced/barley davidson (big engine)	100
SPIRIT OF ASAMA 1999-2000 50.5% dark meat/raisin/fresh/VERY GOOD	120
12YO 100% MALT 40% violet/sherry/butterscotch/sulphur/turbo charged sherry/sherry bomb	140
KARUIZAWA 17yo 61% demerara/lime leaf/lemon thyme/papaya	150
1990 22yo FIRST FILL SHERRY CASK GEISHA 56.1% peach/viscous/smoked almonds/well integrated alcohol.	150



CLOSED DISTILLERIES

KARUIZAWA

1984 28yo FIRST FILL SHERRY CASK NO1 61.6% lacquered wood/bellini top note/treble bass/UNBELIEVEABLE	180
2000 12yo #132.6 REFILL SHERRY BUTT SMWS 63% matured pear/on point/refined/pure/light almond	220
1980 35yo SHERRY CASK GOLDEN 2015 SAMURAI 61.6% UNBELIEVEABLE	240
1984 KARUIZAWA 29yo SHERRY CASK #3662 TWE & SHINANOYA 61% lemon drizzle cake	350
GHOST SERIES #7 TIME SLIP REINVIGORATED: 30yo KARUIZAWA & 45yo KAWASAKI BLENDED IN THE 1970'S 43% karuizawa so much of it all...	350
1999 BUTTERFLY 18yo #6258 SHERRY CASK 61.2% malty/fudge/honeycomb	350
1999 CHERRY BLOSSOM 17 #671 SHERRY CASK 61.3% cranberry/fudge	350
2000 CROW 17yo #2577 61% chocolate/raisin/malt/sherry in HD	350
2000 FRESHLY BUDDED BRACKEN 16 yo #7497 SHERRY CASK 61.4% mineral/flinty/smooth	350
2000 PLUM BLOSSOM 17yo #512 SHERRY CASK 59.5% stewed apricots/red apple/quintessentially karuizawa	350
1981 33yo SHERRY CASK BLACK SAMURAI 63.4% OMG	400
KARUIZAWA BOUTIQUE-Y BATCH #1 48.9% whisky espresso	400
1982 30yo #8444 BOURBON CASK COCKTAIL SERIES 58.6% butterscotch/creamy papaya/dry forest fruits	400
30yo GEISHA #8606 BOURBON CASK 55.8 chocolate orange/structured/fluid/balanced	450
1981 33yo #152 SHERRY CASK 54.5% dark chocolate truffle/CHOCOLATE/dried apricot/peaty/apple/ DELICIOUS	450
1984 29yo #3663 FIRST FILL SHERRY CASK 56.8% walnut/coffee/buttermilk/blackcurrant leaf	450

CLOSED



035

CLOSED DISTILLERIES

KARUIZAWA

1984 33yo #3579 SHERRY CASK GOLDEN GEISHA 63.4% dates/LEATHER/molasses/figs	450
1981 32yo #6056 FIRST FILL SHERRY CASK TWE 60.3% fresh/cherry/plum/tobacco/cedar/eucalyptus	450
1981 31yo #3667 SHERRY CASK GOLDEN GEISHA 59.4% sour cherry bomb/passion fruit/honeydew/pomegranate/hibiscus	450
1970 42yo #67 SHERRY CASK 59.4% lilac/oak/banana bread/keeps going on forever!	450
1969 42yo #8183 BOURBON CASK 61.3% F***k/raspberry ripple ice cream/marzipan/so good!	500
30yo GIESHA #8606 BOURBON CASK 61.3% chocolate orange/structured/fluid/balanced	450
1981 31yo #78 SHERRY CASK PENDRE LE TEMPS 60.5% ginger beer/strawberry/ELEGANT/Brazil nuts	500
1983 31yo #3663 SHERRY CASK WHITE SAMURAI 59.1% almond chocolate/sugar plums/melon/RIDICULOUS	500
1995 KARUIZAWA 13yo MERCIAN ROUGE RED WINE CASK #5021 63.4% dates/LEATHER/molasses/figs	500
1983 28yo #7576 SHERRY CASK NOH 57.2% sweet tobacco/gingerbread/juicy/hot/fruity	500
1981 31yo #4961 BOURBON CASK SHINIANOYA 5TH ANNIVERSARY 60.9% nectarine/fig/stupidly delicious	520
1884 30yo #8173 BOURBON CASK 58.5% Yet to be tasted. Tell us what you think!	600
EMERALD GEISHA 35yo #8518 BOURBON CASK 54.4% leather/smoke/peat	650
EMERALD GEISHA 33yo #8908 SHERRY CASK 59.1% cranberry/subtle/sweet sherry/pepper	650



HANYU

Hanyu Distillery was founded in 1941 by Akuto family, initially as a sake brewery and Shochu distillery, 31 miles from Chichibu. In 1980, serious attempts begun, to produce a Scotch-style malt whisky.

This lasted until 2000 when the whisky business finished due to a weakened profitability. The distillery equipment was dismantled and sold to Ichiro Akuto (Chichibu) in 2004. The house style was similar to Speyside, with distinct sherry markers and a light stroke of burning peat.

2000 16yo #362 BOURBON CASK 56.1% juicy/maple/strawberry	70
2000 16yo #359 RED OAK HOGSHEAD 56.6% shortbread/cake/cracked black pepper	80
2000 ICHIRO'S MALT 14yo #923 BOURBON BARREL FOR TAKSHIMAYA 57% toffee/raisin/peachy/loooooong finish	90
TAY BAK CHIANG 14yo AMERICAN HOGSHEAD 59.9% primrose/soy/fragrant/lonnnnnng finish/chocolate	150
2000 15yo #358 RED OAK HOGSHEAD 56.9% strawberry/shortbread/pink peppercorn/AWESOME	150
HANYU ISETAN 1991 23yo #1386 MADERA CASK 54.1% antique/walnut/mango/lacquer/SO GOOD/static sizzling tingling	190
HANYU ISETAN 2000 14yo #531 COGNAC CASK 55.5% manuka honey/melon/dry/bubblegum	190
6 OF HEARTS 21yo #405 HOGSHEAD AND PUNCHEON 57.9% effervescent tangerine/orange/sherbet/bright and fresh	200
9 OF CLUBS 20yo #401 HOGSHEAD AND BOURBON BARREL 57.3% millionaire shortbread/elegance/JUST AWESOME/on point	200
HANYU 2000 14yo ZUMA ROKA #919 57.4% nectarine/red currant/PLUM/ginger ale	300
GHOST SERIES #3 14yo GRAPPA CASK #1702 59.9% a whisky you've never tried before...	300
THE JOKER COLOUR LABEL 57.4% muscular/fino sherry/chocolate coffee beans	350



CLOSED DISTILLERIES

KAWASAKI

Kawasaki was set up in 1955 on the outskirts of Tokyo. One of the smallest distilleries in Japan, it is not as well known as its sister distillery Karuizawa, but had a reputation for making excellent grain whisky. By the late 1990s, The companies fortunes began to shift and in 2006 Mercian became part of Kirin Holdings, which was not interested in whisky making. As a consequence, both the Kawasaki and Karuizawa distilleries were closed down and the remaining stock locked up in a basement. This might have been the end of the story had it not been for Ichiro Akuto, the founder of Venture Whisky and owner of Chichibu distillery. Ichiro bought up much of what was remaining of the Karuizawa and Kawasaki stocks and marketed it under the label "Ichiro's Choice"

1981 26yo REFILL SHERRY BUTTS 62.4% sticky cherry/sandle wood/glazed cherry/f***k/AMAZING/sherry truffle	300
1982 27yo REFILL SHERRY BUTTS 65.4 fruits/mature red fruit/whisky/whisky truffle/light smoke	300
1976 33yo REFILL SHERRY BUTTS 65.6% the best grain whisky ever made	400
GHOST SERIES #4 NONGATTA 1980 33yo SINGLE CASK #6165 59.6% holy s**t	900



KAGOSHIMA

Active from 1953, The Kagoshima distillery was located on the island of Kyushu. Surrounded by volcanoes, it was often called the "Naples of the East" Malt whisky made here was called Satsuma whisky. Kagoshima stopped production in 1985



KAGOSHIMA MALTAGE SATSUMA 12yo 43%
history/built in clay/asparagus

350



COCKTAILS

OLD FASHIONED

Nikka Coffey Grain, Sugar, Bitters

15

SWEET MANHATTAN

Yamazaki 12yo, Cocchi Torino, Bitters

25

WHISKY SOUR

Hakushu Distiller's Reserve, Citrus, Sugar, Foamer

15

BOULEVARDIER

Nikka Taketsuru Pure Malt, Antica Formula, Campari

15



WHISKY GLOSSARY

WHISKY: The name is an English corruption of the ancient name for spirits "water of life" - which in Scottish and Irish Gaelic is "uisge beatha" or "usquebaugh" and sounded to the English ear like "uishgi" and hence "whisky".

AMERICAN OAK: Also known as White Oak or by the binomen *Quercus Alba*, American oak is widely used in whisky cooperage. American Oak has a high vanillin content.

ANGEL'S SHARE: (ALSO 'PART DES ANGES') As the whisky ages a small percentage of alcohol evaporates, thus lowering the spirit's abv.

BARREL: A large wooden vessel used to store maturing spirit. In the whisky world these must be made from Oak. They are built by coopers and are of varying sizes. A standard whisky barrel has a capacity of approximately 40 gallons (180 litres). The larger the barrel, the less wood contact with the spirit. So, a smaller barrel, in theory, can mature whisky faster.

BLENDED WHISKY: Malt whisky combined with grain whisky. By law there must be a minimum of 40% malt whisky.

CHILL-FILTRATION: A method of filtering whisky employed to remove residue and a cloudiness which appears when the spirit reaches lower temperatures.

FEINTS: (AKA HEADS, TAILS OR AFTERSHOTS) The unusable end of a distillation run, unpotable even to the most hardened drinker.

GRAIN WHISKY: Indicates by contrast that the raw material is unmalted barley, wheat or maize produced as a continuous process in a column still.

MALT WHISKY: This indicates that the raw material is barley malt, by itself fermented with yeast and distilled in a pot still. This produced a far superior whisky to the common grain whisky found in blends.

Maturation: The ageing process of whisky. Whisky can only be aged within an oak cask, it is widely believed that whisky does not age in the bottle.

OAK: The variety of wood used as a material for building barrels, as well as a number of other items used during the production of whisky. Oak is from the genus *Quercus* and there are roughly 400 species.

PEATED MALT: Malted barley which retains a strong peaty-character after it is kilned over peat fires.

PEAT: A dark, partially decayed organic matter formed in the wetlands. It is formed when full decay is arrested by acidic conditions, and when oxygen is not present. Over thousands of years of decomposition it becomes a flammable substance, traditionally used to fire the malted barley kilns. Its flavour is very intense and is oft associated with tar, bitumen and medicinal notes and due to the high incidence in the locality.

POT STILL: A traditional still used to distil single malt whisky, among other varieties. Pot Stills are almost exclusively made of copper and are based upon the alembic still, created around the eighth century AD by the Arabian alchemist Jabir ibn Hayyan.

PURE MALT: A term that usually refers to Blended Malt Whisky. Nikka released a 'Pure Malt' range.

UNPEATED MALT: Malted Barley that has been kilned over fires not fuelled by peat, thus with very little or no phenolic content.

VATTING: A now disused term for the blending of malt whisky with that from other distilleries without the addition of grain whisky, or vice versa.

WASH: Fermented Wort, a sort of beer of about 7 to 8% ABV.

WORT: The liquid drawn from the Mash Tun after the mashing process is complete. Present now here are the sugars which will later be fermented with the addition of yeast.

YEAST: (aka Barm) A micro organism from the Fungi kingdom. Yeast is used in the fermentation process for it feeds on sugar and produces carbon dioxide and ethyl alcohol.

PUNCHEON: 500 Litres barrel made from American or Spanish oak, used mainly to age Rum or Sherry and finish whisky. The large size guarantees a slow ageing process.

HOGSHEAD: A 250 Litres barrel which is made of 5 dismantled bourbon barrels, with new American oak tops.

SHERRY BUTT: 500 Litres long shaped barrel made from European oak used to age Sherry.

PORT PIPE: 650 Litres cask used to age Port wine.

MIZUNARA: Japanese oak, rare and appreciated for its spiciness and richness.

QUARTER CASK: 50 litres American oak barrel, its short size accelerates the ageing process.